

# PURUS COMMUNITY ACTION PLAN

Padang City was struck by an earthquake on 30 September 2009. Over the next year, residents rebuilt their homes, children went back to school, businesses reopened, and fishers returned to the sea. To assist the process of recovery, both UN HABITAT and Mercy Corps sponsored Community Action Planning (CAP) in Kelurahan Purus in July 2010. The top three priorities will be implemented by Mercy Corps. These include: 1) Building a new septic tank system, 2) Cleaning the drainage canal, 3) Repairing the communal water taps. The participants also identified four other solutions that should be prioritized during the next musrenbang process – which are described on this poster.

## PRIORITY 1 – SKILLS TRAINING

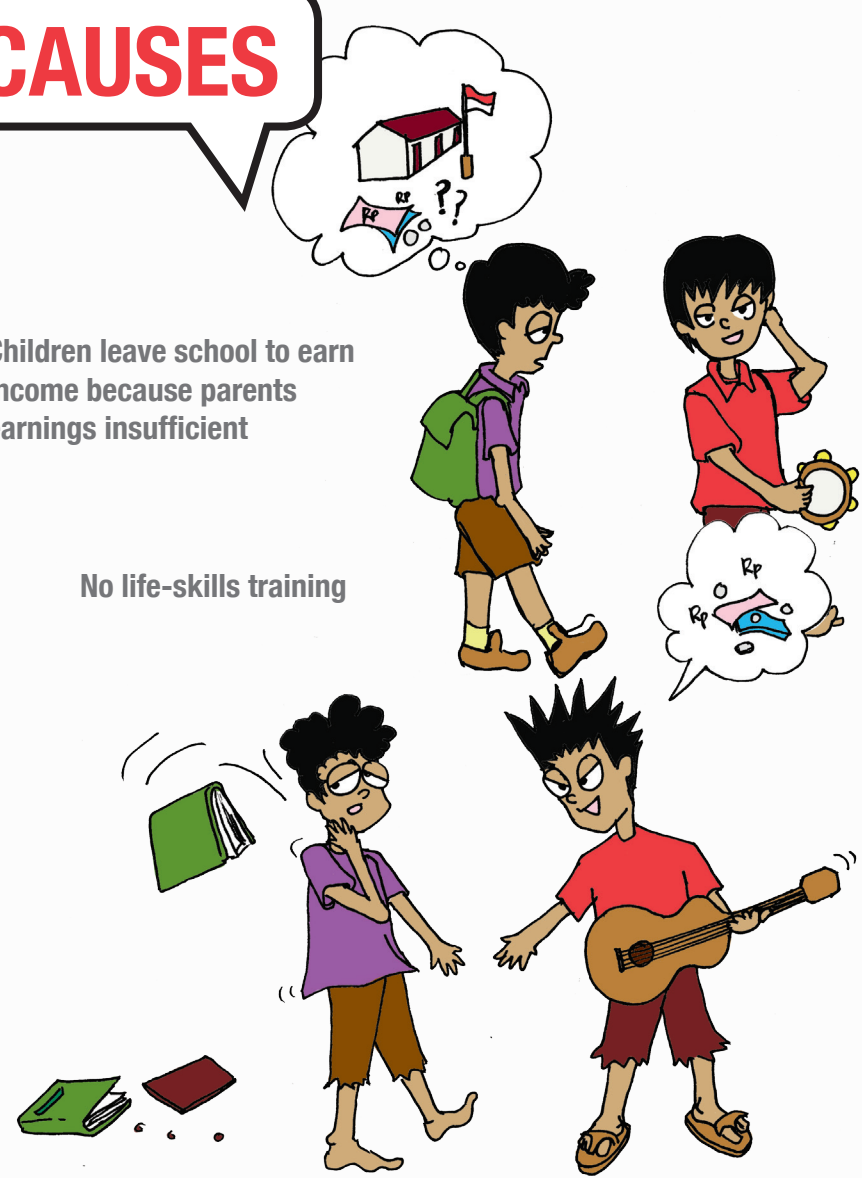
Address problem of low education and lack of skills so residents can find employment.

### STRATEGY

#### CAUSES

Children leave school to earn income because parents earnings insufficient

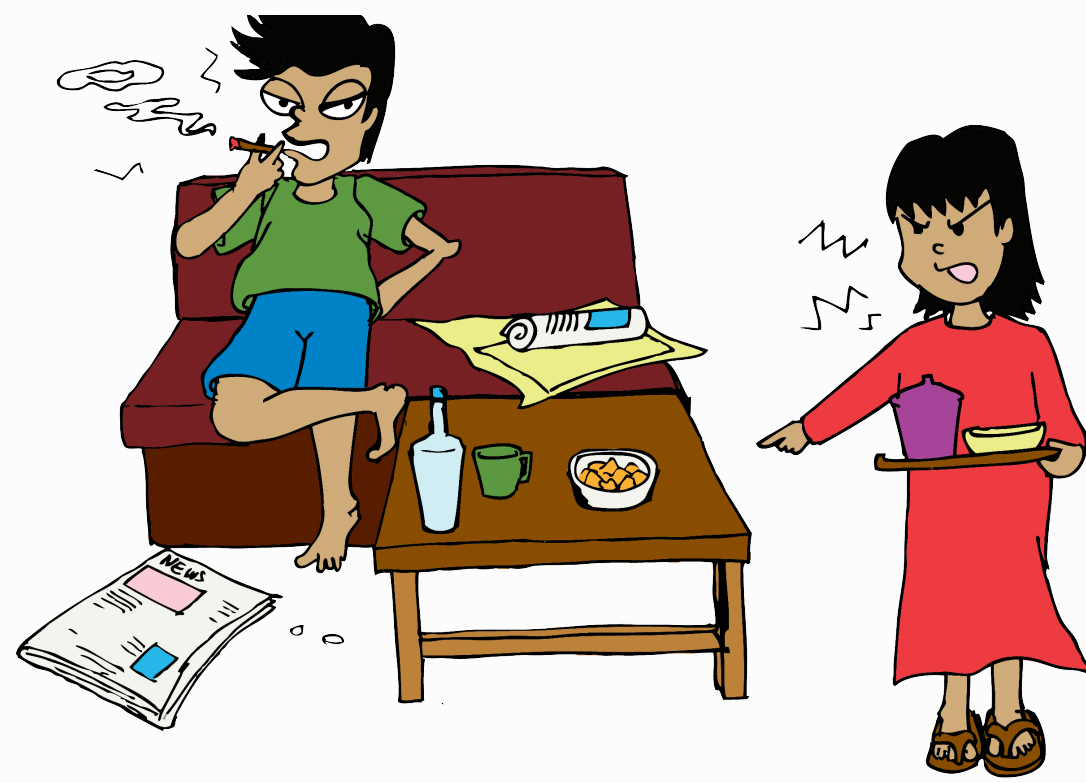
No life-skills training



#### EFFECTS

Unemployment

Bad attitudes



## PRIORITY 2 – RUBBISH MANAGEMENT

Address accumulation of rubbish in streets and canal by providing medium-size rubbish bins along Jalan Sumudra every 100 meters and one large bin in each RW.

#### CAUSES

Bad habits

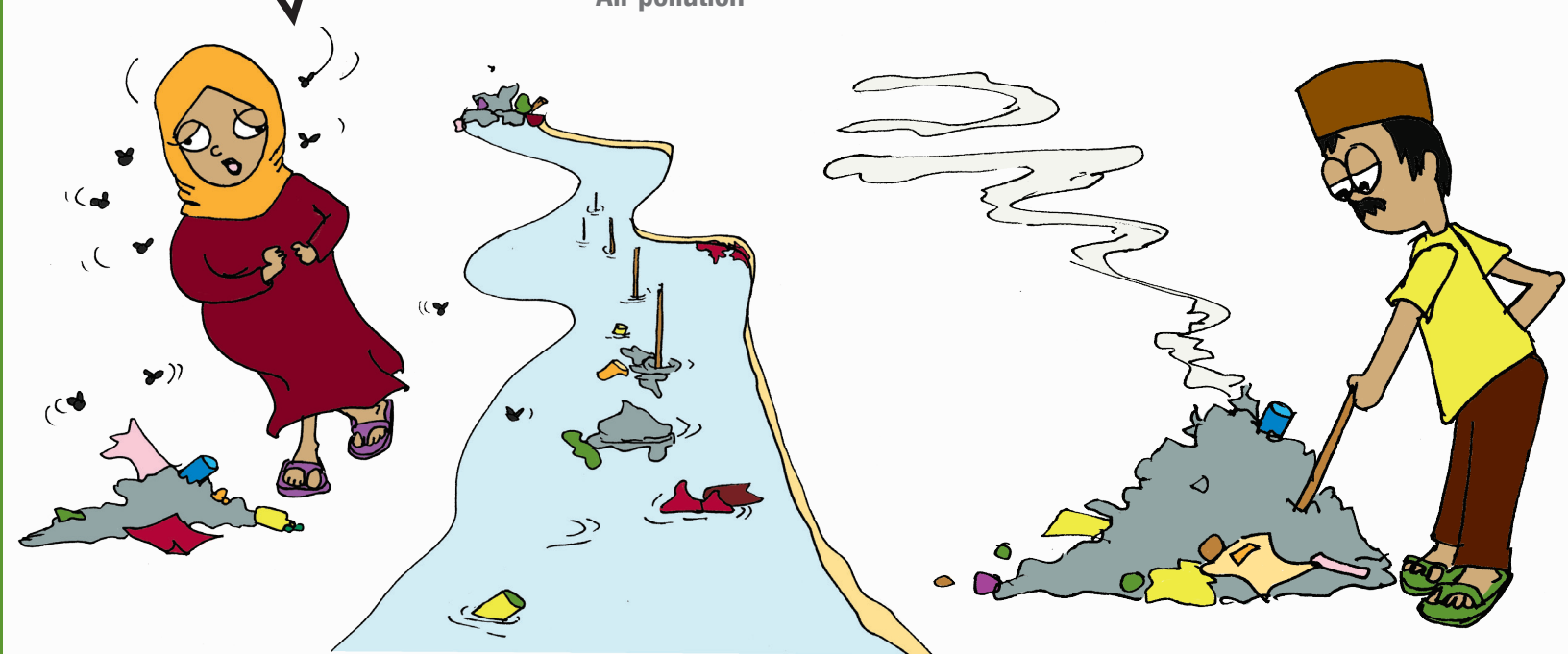
Lack of regular rubbish collection

No locations for rubbish disposal



#### EFFECTS

People burn trash Health issues Drainage clogged  
Air pollution Flooding Purus looks like a slum



### STRATEGY



## PRIORITY 3 – ACCESS TO CAPITAL

Address lack of capital available to small businesses in Purus.

### STRATEGY



#### CAUSES

Lack of information  
Lack of education and skill  
Bureaucracy  
No collateral to propose for bank loans  
Lack of trust from investor  
Corrupt credit funds

#### EFFECTS

Cannot open new business  
Loan sharks  
Unemployment  
Stress  
Unfair distribution of capital  
Increasing poverty

## PRIORITY 4 – REPAIR PATHS

Address circulation issues caused by earthquake damage to foot paths.

### STRATEGY



#### CAUSES

Earthquake damage  
Low quality construction materials



#### EFFECTS

Blocked evacuation routes  
Increased number of traffic accidents

Participants: Pak Lurah Nazaruddin, Baharuddin, Benzulbas, Sabaruddin Yahya, Ibrahim, Mukarni, Yudhi Brata, Yursal, Asril Mangkudum, Rosfian Rasam, Ramli Kasim, Sidi Abdullah, Nurman, Geri, Bung Topid, Bung Tarib, Linda, Ali Umar, Syafri, Ir. Ernie Boerhai, Martalem, Lisa Sukmar, Yacub Sinoya, Anwirdan, Syafri B., Masril, Romi Saputra, Rudi, Ermaida, Aziz, Mellisa Jayatri

Facilitators: Hani Syfain, John Taylor, Michael Haggerty, M. Fiqhi Fahmi, Ezri Hayat, Arianto, Dasci Fadidhu; Illustrations by Mellisa Jayatri